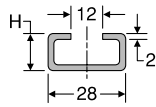


TSC

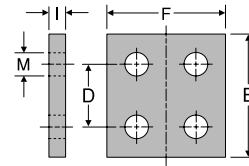
Mounting Rail



TUBE FITTING PART #	GROUP #	B (mm)	H (mm)	LENGTH (meter)	STANDARD FROM STOCK
TSC1X	ALL	40	22	1	•
TSC2X	ALL	40	22	2	•

DPDC

Double Top Plate

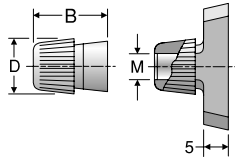


TUBE FITTING PART #	GROUP #	B (mm)	D (mm)	F (mm)	I (mm)	M (mm)	STANDARD FROM STOCK
DPDC1X	1	55	33	60	8	11	•
DPDC2X	2	70	45	60	8	11	•
DPDC3X	3	85	60	60	8	11	•
DPDC4X	4	115	90	90	10	14	•
DPDC5X	5	152	122	120	10	18	•
DPDC6X	6	205	168	160	15	22	•
DPDC7X	7	250	205	180	15	26	•
DPDC8X	8	320	365	240	25	33	•



TMC

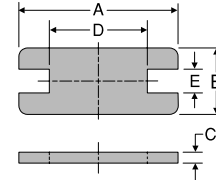
Lock Nut



TUBE FITTING PART #	GROUP #	B (mm)	D (mm)	M (mm)	STANDARD FROM STOCK
TMC1X	1-3	20	17.9	M10 x 1	•
TMC4X	4	20	19.8	M12 x 1.5	•

SPC

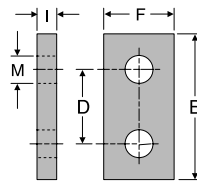
Locking Plate



TUBE FITTING PART #	GROUP #	A (mm)	B (mm)	C (mm)	D (mm)	E (mm)	STANDARD FROM STOCK
SPC1X	1	55	30	8	14	15.5	•
SPC2X	2	70	30	8	26	15.5	•
SPC3X	3	85	30	8	41	15.5	•
SPC4X	4	115	45	10	69	17.5	•
SPC5X	5	152	60	10	97	21.5	•
SPC6X	6	205	80	15	137	27.5	•
SPC7X	7	250	90	15	169	29.5	•
SPC8X	8	320	120	25	219	35.5	•

DPC

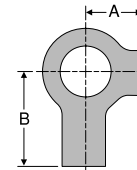
Top Plate



TUBE FITTING PART #	GROUP #	B (mm)	D (mm)	F (mm)	I (mm)	M (mm)	STANDARD FROM STOCK
DPC1X	1	55	33	30	8	11	•
DPC2X	2	70	45	30	8	11	•
DPC3X	3	85	60	30	8	11	•
DPC4X	4	115	90	45	10	14	•
DPC5X	5	152	122	60	10	18	•
DPC6X	6	205	168	80	15	22	•
DPC7X	7	250	205	90	15	26	•
DPC8X	8	320	365	120	25	33	•

USC

Locking Washer



TUBE FITTING PART #	GROUP #	A (mm)	B (mm)	STANDARD FROM STOCK
USC1X	1	13	22	
USC2X	2	13	22	
USC3X	3	13	22	
USC4X	4	15	28	•
USC5X	5	18	32	
USC6X	6	21	36	
USC7X	7	25	42	
USC8X	8	32	52	

Dimensions and pressures for reference only, subject to change.